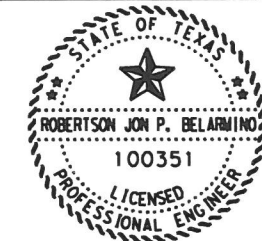
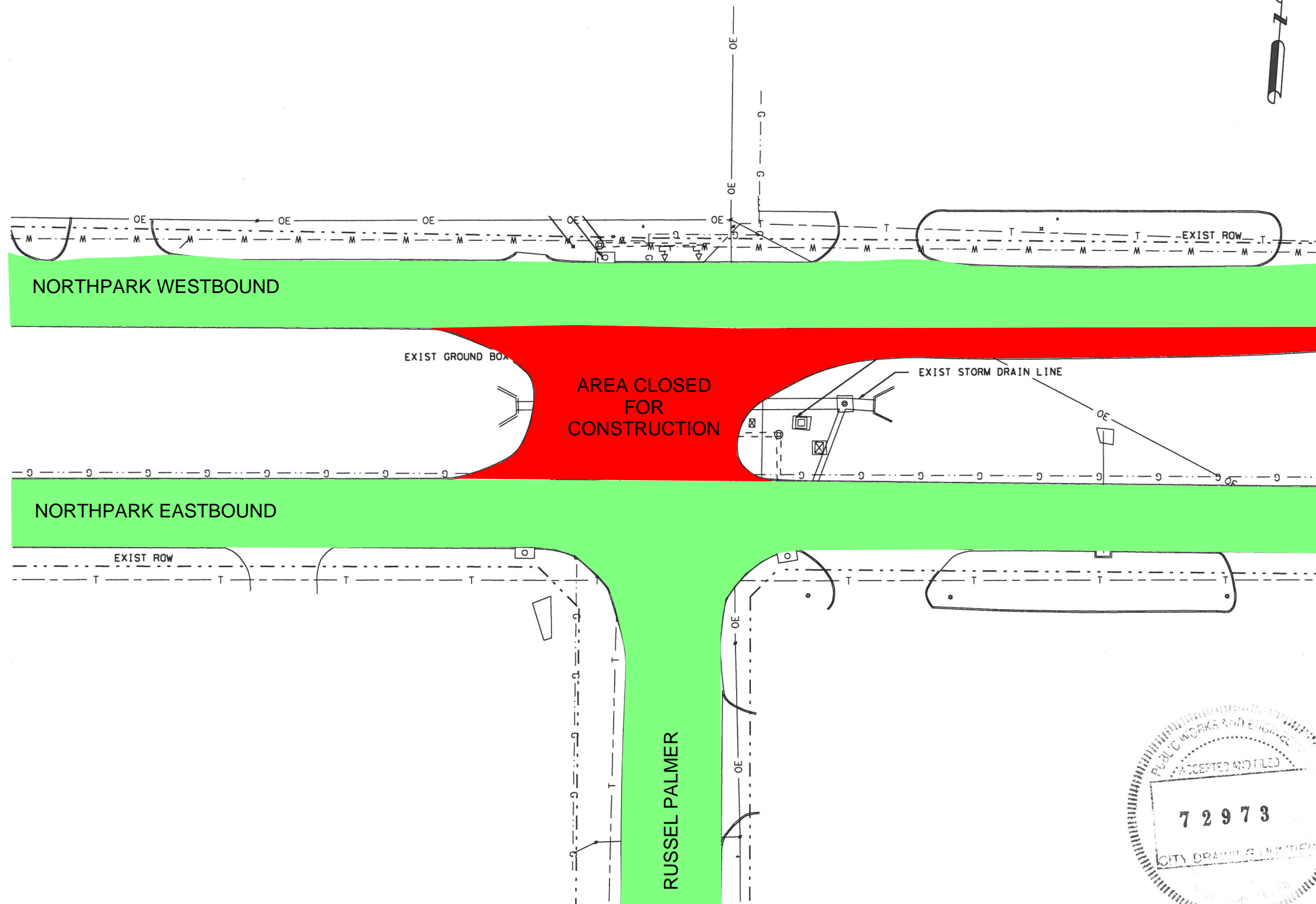


- AREA TO REMAIN OPEN DURING CROSSOVER CONSTRUCTION
- AREA CLOSED DURING CROSSOVER CONSTRUCTION

CONSTRUCTION AT RUSSEL PALMER
STARTING AT 9PM ON APRIL 5, 2024
ENDING 5AM ON APRIL 8, 2024

- LEGEND
- SIGNAL POLE AND MAST ARM
 - EXIST VIVDS
 - EXIST ILLUMINATION
 - EXIST GROUND BOX
 - EXIST TRAFFIC SIGNAL CONTROLLER
 - EXIST STORM DRAINAGE
 - EXIST MANHOLE
 - EXIST PED POLE
 - EXIST DIRECTION OF TRAFFIC FLOW
 - EXIST RAILROAD ROW
 - EXISTING ROW
 - EXIST UNDERGROUND COMM LINE
 - EXIST UNDERGROUND WATER LINE
 - EXIST UNDERGROUND GAS LINE
 - EXIST UNDERGROUND SEWER LINE
 - EXIST UNDERGROUND POWER LINE
 - EXIST UNDERGROUND FIBER OPTIC
 - EXIST OVERHEAD POWER LINE



05/18/2022

0" 20" 40"
SCALE : 1"=40'

NO.	REVISIONS	BY	DATE

HNTB
HNTB Corporation
The HNTB Companies
Infrastructure Solutions
Firm Registration Number 420

LH RA
LAKE HOUSTON REDEVELOPMENT AUTHORITY & TRIZ 10
600 HUNTON ANDREWS KURTH LLP
600 TRAVIS, SUITE 400
HOUSTON, TX 77002

CITY OF HOUSTON
HOUSTON PUBLIC WORKS

NORTH PARK DRIVE

EXISTING
CONDITIONS
RUSSELL PALMER
AT NORTH PARK DR

SHEET 1 OF 1

DESIGNED:	FED. RD. DIV. NO.	STATE	CITY OF HOUSTON	HHS	HIGHWAY NO.
CHECKED:	6	TEXAS	SEE TITLE SHEET		CS
DRAWN:	STATE	COUNTY	CONTROL	SECTION	JOB
CHECKED:	DISTRICT	NO.	NO.	NO.	NO.
	HOU	MONTGOMERY	0912	37	232
					490

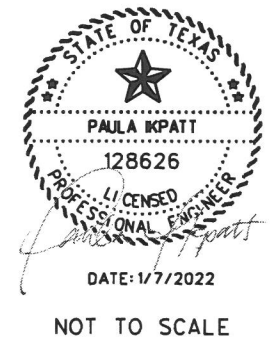
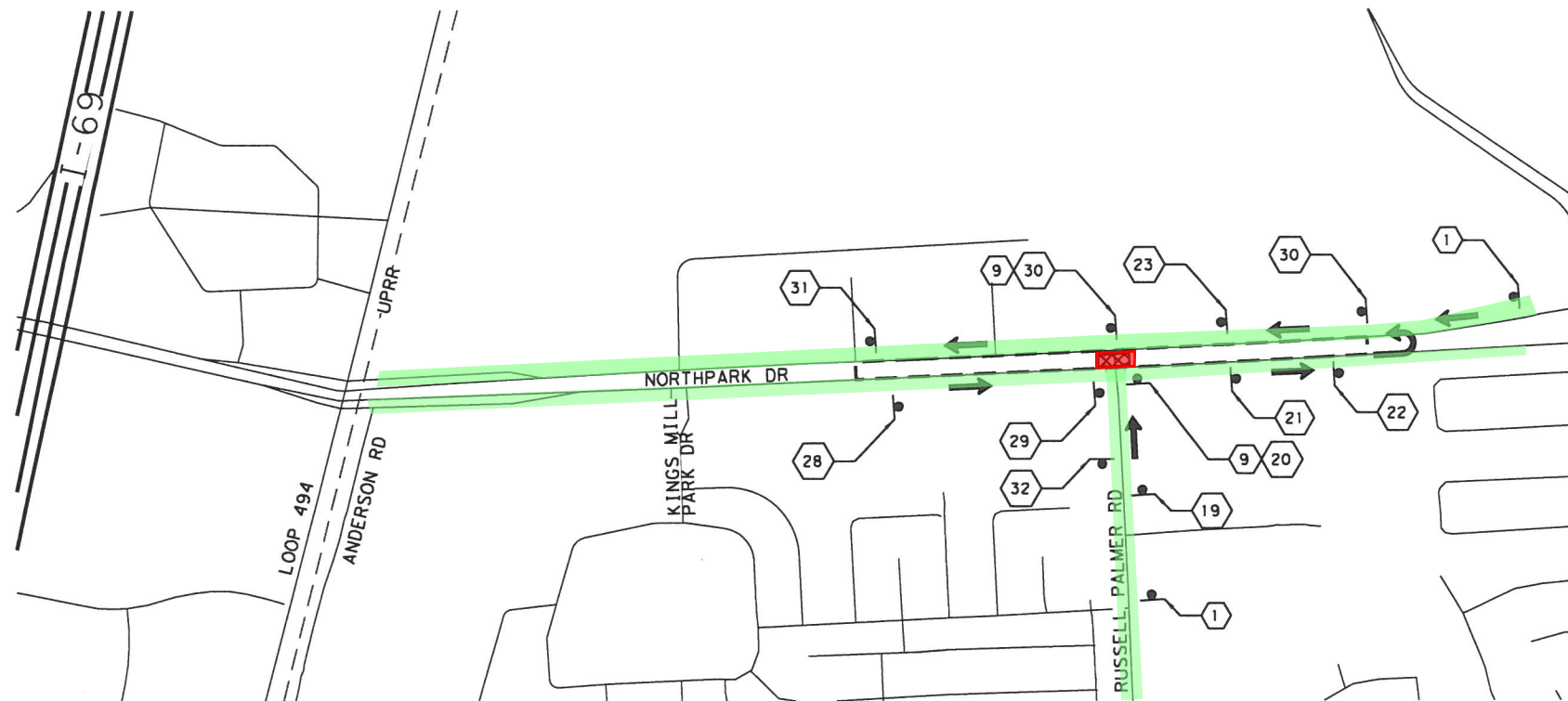
5/18/2022 2:10:19 PM

- AREA TO REMAIN OPEN DURING CROSSOVER CONSTRUCTION
- AREA CLOSED DURING CROSSOVER CONSTRUCTION

CROSSOVER DETOUR AT RUSSEL PALMER
STARTING AT 9PM ON APRIL 5, 2024
ENDING 5AM ON APRIL 8, 2024

- LEGEND
- WORK ZONE
 - CONSTRUCTION WARNING SIGN
 - TY III BARRICADE
 - PROPOSED TRAVEL FLOW
 - DETOUR PATH

- NOTES:
- DETOURS ARE FOR OFF-PEAK CLOSURES ONLY.
 - REFER TO TRAFFIC CONTROL PLAN CONSTRUCTION DETOUR DIAGRAM LEGEND



NO.	REVISIONS	BY	DATE
HNTB HNTB Corporation The HNTB Companies Infrastructure Solutions Firm Registration Number 420			
LH RA LAKE HOUSTON REDEVELOPMENT AUTHORITY & TIRZ 10 600 HUNTON ANDREWS NORTH LRP 600 TRAVIS, SUITE 420 HOUSTON, TX 77002			
CITY OF HOUSTON HOUSTON PUBLIC WORKS NORTH PARK DRIVE TRAFFIC CONTROL PLANS DETOUR DIAGRAMS RUSSELL PALMER RD			
SHEET 1 OF 1			
DESIGNED TO	FED. RD. DIST. NO.	STATE	CITY OF HOUSTON NOS.
CHECKED TO	6	TEXAS	SEE TITLE SHEET
DRAWN TO	DISTRICT	COUNTY	CONTROL SECTION
CHECKED PI	HOU	MONTGOMERY	0912 37 232 118
1/7/2022		7:46:42 PM	