

Northpark Drive Overpass Project (T-1013)

Pre-Bid Meeting | July 6, 2022 | 2:00pm



Lake Houston
Redevelopment Authority



HNTB



Introductions

- **Client**
 - Lake Houston Redevelopment Authority (LHRA) / TIRZ 10
 - City of Houston - District E

- **Design Team**
 - HNTB Corporation => Roadway, Ret. Walls, Bridge, TCP, Traffic Signals, Illumination
 - EHRA Engineering => Roadway, Drainage
 - B2Z Engineering, LLC => Geotechnical
 - M2L Associates, Inc. => Landscaping, Irrigation, Tree Mitigation
 - IMS Engineers => Signing/Striping, SWPPP, Utility Coordination
 - 5Engineering, LLC => Hydraulics and Hydrology

- **Construction Management Team**
 - HNTB Corporation

- **Potential Bidders**



Project Stakeholders

- ❑ Lake Houston Redevelopment Authority (LHRA) / TIRZ 10
- ❑ City of Houston - District E
- ❑ TxDOT - Houston District
- ❑ Montgomery County - Precinct 4
- ❑ Harris County Flood Control District (HCFCD)





Project Name & Limits

- **Project Name**
 - Northpark Drive Overpass Project (T-1013)

- **Project Limits**
 - The project limits span from just west of US 59/I-69 to just east of Russell Palmer Road and is approximately 1.3 miles in length.

Project Map





Project Description

- **Scope of Work Highlights**
 - Reconstruction of the existing four-lane facility to a six-lane facility
 - Construction of a new closed drainage system
 - Construction of amenity ponds and landscaping improvements near the intersection with US 59/I-69
 - Construction of a new grade separation (bridge overpass) over State Loop 494 and the Union Pacific Railroad with at-grade access roads

WBS No. N-T10000-0001-7



VARIES 120' - 800'

EXISTING ROW

NORTH PARK VARIES 6' - 12'

MEDIAN

24'

WBML

24'

EBML

0.5'

0.5'

12'

12'

LANE

LANE

LANE

LANE

2.00%

2.00%

5'

SW

EXIST ROW

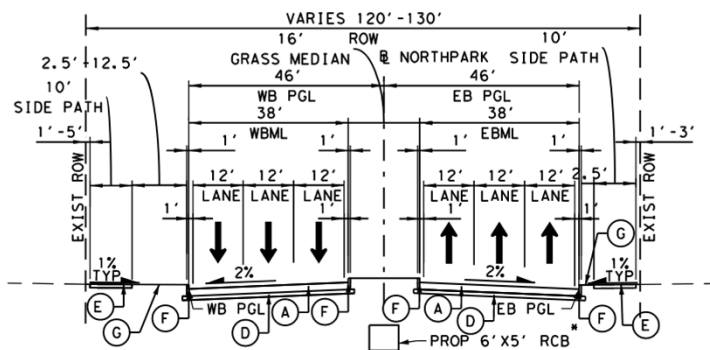
5'

SW

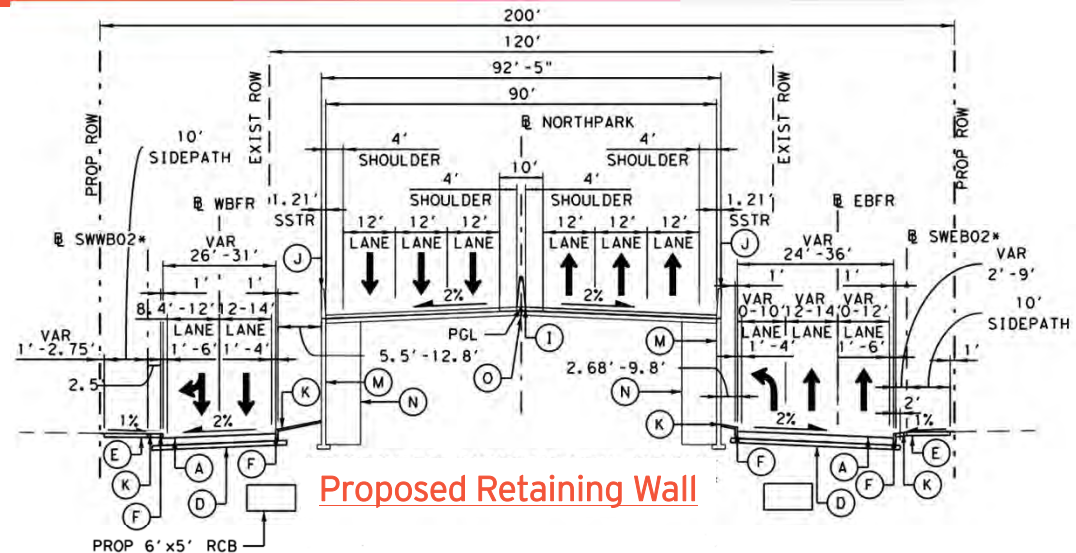
EXIST ROW

Existing Northpark Dr

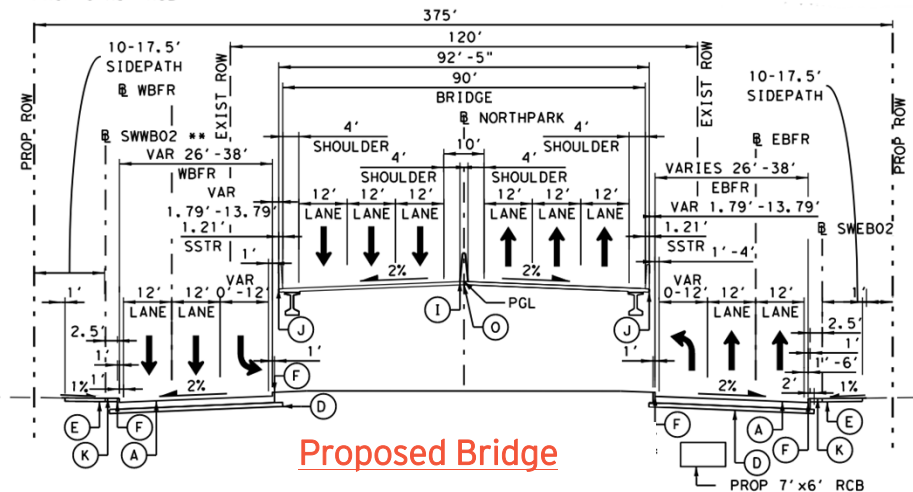
Existing Northpark Dr



Proposed At-grade



Proposed Retaining Wall



Proposed Bridge



Amenity Ponds





Design Specifications

- Multiple Specifications Used on This Project
 - City of Houston
 - TxDOT
 - UPRR
 - Special Specs
- Refer to Document 00405 in project manual for reference specification that applies to each bid item

NORTH PARK DRIVE OVERPASS PROJECT
T-1013
LAKE HOUSTON REDEVELOPMENT AUTHORITY

SCHEDULE OF UNIT PRICE WORK

Document 00405

SCHEDULE OF UNIT PRICE WORK

This document, consisting of TWENTY-ONE (21) pages, constitutes a Proposal Supplement to Document 00310 - Form of Proposal for Lake Houston Redevelopment Authority Project titled NORTH PARK DRIVE OVERPASS PROJECT.

When a Contract is awarded, this Document becomes a supplement to Document 00510 - Form of Agreement between the Lake Houston Redevelopment Authority and Contractor.

GENERAL ITEMS						
Item No.	Spec Ref.	Item Description	Unit	Unit Qty.	Unit Price in Figures ⁽¹⁾	Total in figures
GEN.01	COH 01502	MOBILIZATION	LS	1	\$2,300,000	
GEN.02	COH 01554	INSTALLATION OR REPLACEMENT OF PERMANENT SIGNS (SIGNS, POLES, ANCHORS, AND HARDWARE PROVIDED BY CITY)	EA	504		
GEN.03	COH 01570	SANDRAG BARRIER	LF	85		
GEN.04	COH 01570	INLET PROTECTION BARRIER	LF	10,270		
GEN.05	COH 01570	FILTER FABRIC BARRIER	LF	6,000		
GEN.06	COH 01575	STABILIZED CONSTRUCTION EXIT	SY	1,000		
GEN.07	COH 02233	CLEARING AND GRUBBING	AC	106		
GEN.08	COH 02531	TELEVISION INSPECTION OF EXISTING GRAVITY SANITARY SEWER	LF	6,041		
GEN.09	TxDOT 402	TRENCH EXCAVATION PROTECTION (TEMP DRAINAGE RELATED)	LF	611		
GEN.10	TxDOT 502	BARRICADES, SIGNS AND TRAFFIC HANDLING	MO	30		
GEN.11	TxDOT 502	FLAGMAN (UNIFORMED PEACE OFFICER)	LS	1		
GEN.12	TxDOT 506	CONSTRUCTION PERIMETER FENCE	LF	16,000		
GEN.13	TxDOT 508	CONSTRUCTING DETOURS	SY	16,581		
GEN.14	TxDOT 512	PORT CTB (FUR & INST) (LOW PROF) (TY 1)	LF	5,700		



Minority, Women, and Disadvantaged Business Enterprise Program (M/W/DBE)

- **M/W/DBE Goal**
 - The successful Bidder will be required to make good faith efforts to achieve an M/W/DBE participation goal of twenty (20) percent

Railroad Coordination



- ❑ Union Pacific Railroad (UPRR)
 - ❑ UPRR Point of Contact (POC)
 - ❑ UPRR will assign a Construction Management POC (Jason Taylor) to coordinate with during construction
 - ❑ Right of Entry (ROE)
 - ❑ Contractor ROE will be required; Contractor to coordinate ROE agreement process with assigned POC
 - ❑ No work may commence on UPRR's property without a fully-executed ROW Agreement in place
 - ❑ UPRR Plans Approval Status
 - ❑ Plans have not been approved; coordinating final comment related to geotechnical



Utility Relocations

Utility Owner	Type of Facility	Approximate Location	Status	Estimated Clearance Date
Century Link (Lumen)	Communications (Telephone)	Various locations (from Sta. 18+34 to 46+61)	Relocation Plans in Progress	TBD
Entergy	Electric (Power Poles)	Various locations (from Sta. 27+08 to 43+11)	Relocation Plans Completed	Nov 2022
Comcast	Communications (Fiber)	Various locations (from Sta. 63+48 to 67+51; at Sta 64+30 crossing)	Relocation Plans in Progress	TBD
Centerpoint Gas	Natural Gas	Various locations (from Sta. 17+74 to 77+00; from Sta 400+00 to 413+00)	Relocation Plans in Progress	TBD
Centerpoint Electric	Overhead Electric	Various locations (at Sta. 29+28 crossing)	Relocation Plans Completed	TBD
AT&T	Communications (Fiber)	Various locations (from Sta 23+25 to 72+70; from Sta 394+20 to 420+00)	Relocation Plans Completed	TBD
Crown Castle	Communications (Fiber)	Various locations (from Sta. 27+05 to 78+82)	Relocation Completed	Jun 2022



Field Office Considerations

- Refer to Plan Sheet 25 (General Notes) for Potential Site
 - Contractor is not obligated to utilize this property for this project.
- Refer to COH Spec 01520 for Field Office Requirements

Contractor Consideration for Potential Construction Staging/Field Office Site:

A property owner who owns property (approx. 4 acres in total), that is located near Northpark Drive, has reached out to the Lake Houston Redevelopment Authority (LHRA) and has offered that their property be considered as a potential leasing opportunity that can be utilized as a potential construction staging/field office site. The property owner's contact info is shown below for the Contractor's consideration. The Contractor is not obligated to utilize this property for this project.

Property Owner Contact info: Aimee Bennett; 281-960-1972; aimee7523@gmail.com

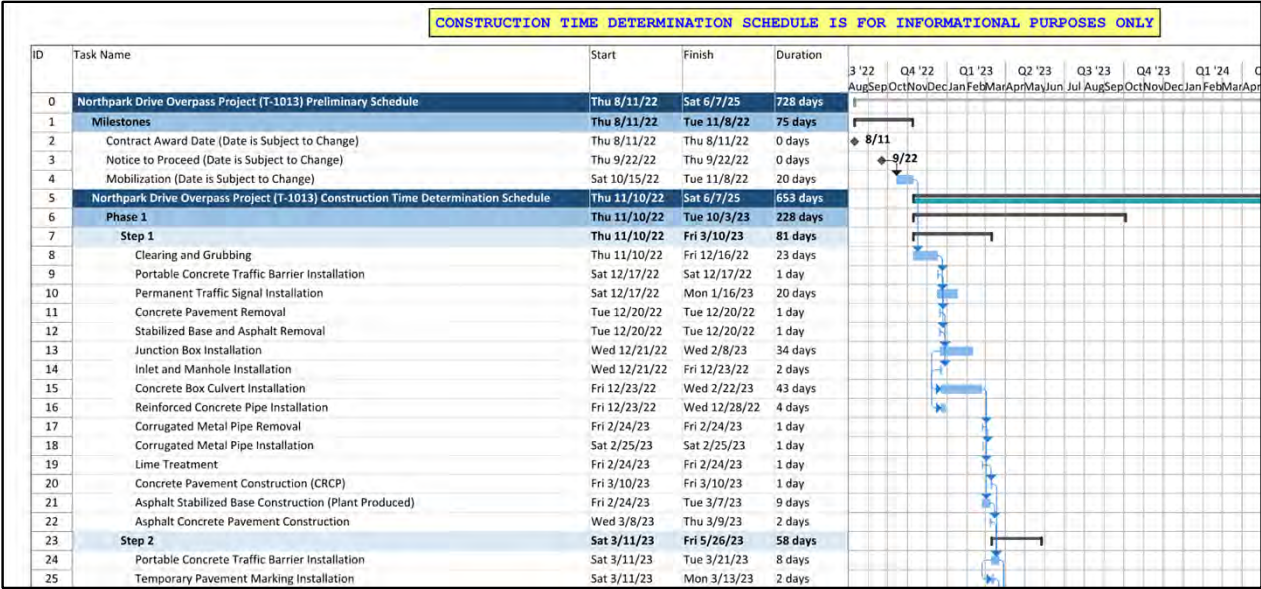
References to manufacturer's trade name or catalog numbers are for the purpose of identification only. Similar materials from other manufacturers are permitted if they are of equal quality, comply with the specifications for this project, and are approved, except for roadway illumination, electrical, and traffic signal items.

The cost for materials, labor, and incidentals to provide for traffic across the roadway and for ingress and egress to private property in accordance with Section 7.2.4 of the TxDOT standard



Construction Time Determination (CTD)

- CTD Assumptions
 - 6-Day Work Week (refer to Item 8 in General Notes)
 - Approx. 32-month construction schedule





TCP Design Notes

- ❑ Maintain two lanes during construction
- ❑ One lane traffic only allowed during off-peak hours, as directed by Engineer
- ❑ Maintain driveway access to all abutting properties during construction
- ❑ Phase construction of median openings
- ❑ Temporary signal phasing at UPRR/Loop 494 and Russell Palmer



TCP Phase 1 (east of Loop 494/UPRR)

- ❑ **Phase 1 Step 1**
 - ❑ Construct 6'x5' RCB storm sewer in center median (Sta 42+50 to KDD Outfall)
 - ❑ Construct WB temp detour pavement (Sta 31+00 to Sta 42+50)
- ❑ **Phase 1 Step 2**
 - ❑ Construct 4'x4' RCB storm sewer (Sta 35+00 to Sta 42+50)
 - ❑ Construct temp detour pavement in center median area (Sta 33+00 to Sta 85+50)
 - ❑ Construct inside portion of EB perm pavement (Sta 38+50 to Sta 85+50)
- ❑ **Phase 1 Step 3**
 - ❑ Construct remaining EB perm pavement (Sta 30+00 to Sta 78+50)
- ❑ **Phase 1 Step 4**
 - ❑ Construct remaining perm pavement at intersections (various locations)



TCP Phase 2

- **Phase 2 Step 1**
 - Construct WB perm pavement (Sta 30+00 to Sta 78+50) - east of Loop 494/UPRR
 - Construct temp pavement along Loop 494

- **Phase 2 Step 2**
 - Construct storm sewer under SB lanes along Loop 494
 - Construct SB perm pavement along Loop 494

- **Phase 2 Step 3**
 - Construct RCB storm sewer on EB and WB ROW edges (Sta 12+00 to Sta 27+00)
 - Construct outside portion of EB temp and perm pavement (Sta 12+00 to Sta 27+00)
 - Construct outside portion of WB temp and perm pavement (Sta 12+00 to Sta 27+00)
 - Construct NB perm pavement along Loop 494
 - Construct amenity ponds near the US 59/I-69 intersection



TCP Phase 3

- **Phase 3 Step 1**
 - Construct inside portion of EB perm pavement (Sta 12+00 to Sta 18+00)
 - Construct inside portion of WB perm pavement (Sta 12+00 to Sta 18+00)
 - Construct median islands (Sta 40+00 to Sta 78+50) - east of Loop 494/UPRR
- **Phase 3 Step 2**
 - Construct retaining walls and bridge (Sta 18+00 to 38+50)
 - Construct sidewalks west of US 59/I-69
 - Final clean up

Questions Received via CivCast

- **Question 1**

- Q1 : Will you post the geotechnical report?
- A1 : The geotechnical reports for this project have been uploaded to CivCast.

- **Question 2**

- Q2 : Per plans sh. 283-288, as well as 303, the soil reinforcement length to design height ratio is 0.7 and 8' minimum length, but plans sh. 301, the soil reinforcement length to design height ratio is 0.55 and 6' minimum length for all rows other than the bottom two. Please clarify which ratio and minimum length to use.
- A2 : The contractor shall use a constant reinforcement length of $0.7 \times H$ (where H is the height of the wall from bottom of wall to top of wall), no less than 8'.



Addendum(s)

- ❑ Addendum No. 1 - in progress
 - ❑ Revision to Document 00405; addition of allowance for RR flaggers
 - ❑ Updates to General Notes
 - ❑ Additional items may be added based on input received at pre-bid meeting
 - ❑ Addendum No. 1 will be uploaded to CivCast by July 13, 2022

NORTH PARK DRIVE OVERPASS PROJECT

EASTEX FWY TO RUSSELL PALMER RD

WBS No. N-T10000-0001-7



Lake Houston
Redevelopment Authority



Bid Package Submittals

- ❑ Due by 4:00pm on Wednesday, August 3, 2022
- ❑ Deliver to Kelly Cashman (Paralegal) at:
 - ❑ Hunton Andrews Kurth LLP
600 Travis Street, Ste 4200
Houston, TX 77002
- ❑ Contact Kelly at (713) 220-4200 for any delivery questions
- ❑ Refer to Document 00100 for Bid Enclosure Requirements



Bid Opening

- ❑ Bid Opening will be conducted in a Virtual format (via Microsoft Teams)
 - ❑ Virtual Bid Opening will be at 6:00pm on Wednesday, August 3, 2022
 - ❑ Virtual Bid Opening Meeting info to be provided at bid package submittal

NORTH PARK DRIVE OVERPASS PROJECT

EAST EX FWY TO RUSSELL PALMER RD

WBS No. N-T10000-0001-7



Lake Houston
Redevelopment Authority



Questions?

NORTH PARK DRIVE OVERPASS PROJECT

EASTEX FWY TO RUSSELL PALMER RD

WBS No. N-T10000-0001-7



Lake Houston
Redevelopment Authority



A copy of today's presentation will be made available to all pre-bid meeting attendees listed on the sign-in sheet.